

# FloorEstimate Pro 5 COMMERCIAL User Guide

Floor Covering Soft  
February 2006

## 1. How to Use this Guide

This guide supplements to FloorEstimate Pro 5 STANDARD User Guide that contains the regular usage directions for FloorEstimate Pro 5. This supplement focuses on **features only available in FloorEstimate Pro 5 COMMERCIAL Edition**, namely:

- Takeoff with GTCO Digitizers
- Import PDF files, Dodge Plan, AutoCAD DXF and DWG files

NOTE: *FloorEstimate Pro 5 is abbreviated as **FEP5** in the rest of the guide.*

## 2. Table of Contents

- Takeoff with GTCO Digitizers
  - Installation of FEP5 COMMERCIAL
  - Takeoff with Digitizers
  - Rescale Takeoff-ed Floor Plan
  - Trouble Shooting
- Import PDF files, Dodge Plan, AutoCAD DXF and DWG files
- Support

## 3. Takeoff with GTCO Digitizers

### 3.1. Installation of FEP5 COMMERCIAL

FEP5 COMMERCIAL can be installed from software CD or from a downloaded executable file. After installation, start the program, from Help/About FloorEstimate Pro, it should show FEP5 Edition and its version numbers.



If you use GTCO digitizer with FEP5 COMMERCIAL, you must install GTCO TabletWorks driver from the program CD shipped with the digitizer hardware.

For any reason you cannot find GTCO CD or have problem installing TabletWorks driver, you may directly download it from the manufacturer's web site:

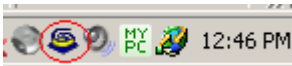
<http://www.gtcocalcomp.com/files/TW-10.02.0003.exe>

Once TabletWorks is installed properly, an icon will show up in the system tray. If the digitizer is not connected, the icon has a red X on top (as circled below).

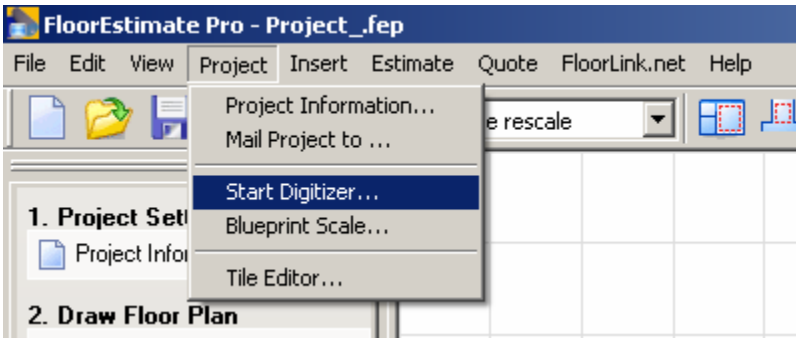


### 3.2. Takeoff with Digitizer

First, make sure digitizer is properly connected to the computer and the TabletWorks icon shows without red X in system tray. Then put a blueprint on top of the tablet pad.



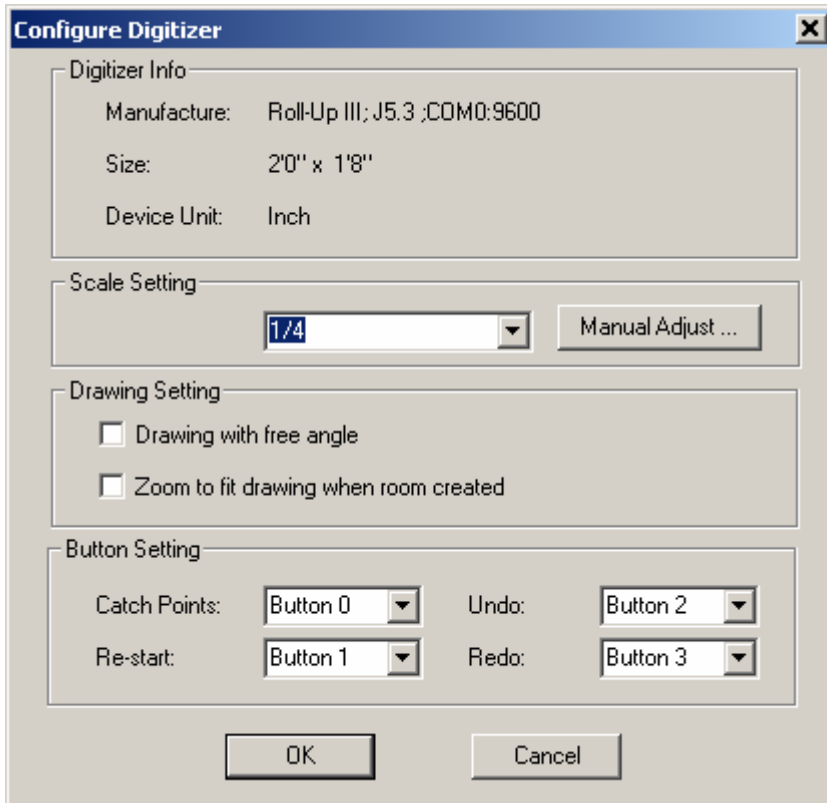
#### Step 1: Start Digitizer from FEP5 Project Menu



#### Step 2: Setup Takeoff Scale

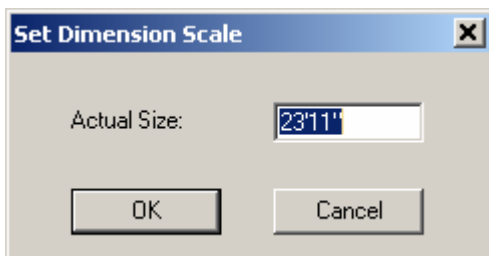
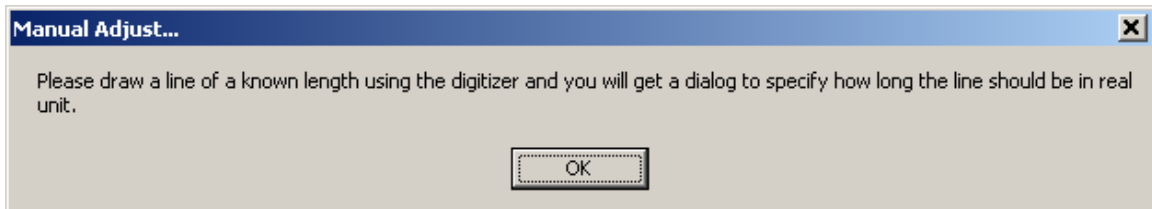
It prompts to set up the blueprint takeoff scale. Read the scale factor from the blueprint, and then select it from the drop-down list from Scale Setting field.

NOTE: If the factor is not among the list, enter it into the field directly from keyboard.



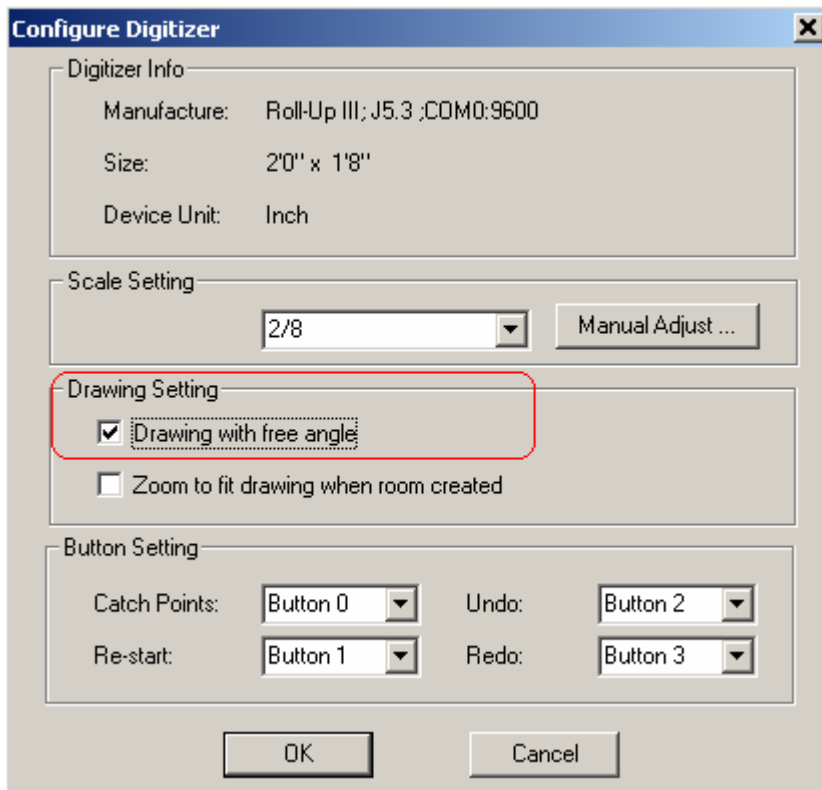
#### Manual Adjustment Option:

If there is no scale factor on blueprint or you prefer to set it manually, click on Manual Adjustment button, it prompts to sample a line and enter an actual size so the program automatically sets up the takeoff scale.



#### Drawing Setting Option:

If the blueprint involves irregular angled shapes, check box **Drawing with free angle** (as shown below). Otherwise, the program draws in 90 and 45-degree angles at takeoff stage.



If **Zoom to fit drawing when room created** option is checked, the program automatically fits current takeoff-ed rooms into a full drawing window.

Button Setting Option:

Normally GTCO digitizers come with two types of pointing devices with different button setting (3-Button Stylus Pen or 16-Button Mouse Pointer). You may take default settings and experiment their functionality in the beginning.

*Catch Points Button:* sample points on blueprint (similar to left-button click of a mouse, or press Stylus pointer)

*Re-Start Button:* quit current room takeoff drawing (removes all midway points)

*Undo Button:* backup one-step from the current point (similar to Ctrl-z operation)

*Redo Button:* redo last point sample.

### Step 3: Takeoff Rooms on Blueprint

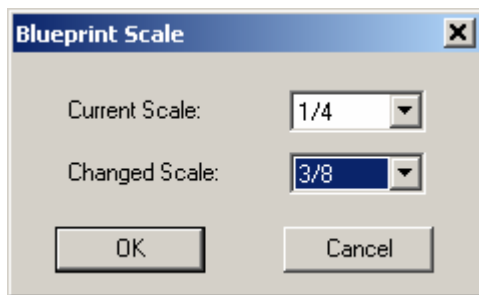
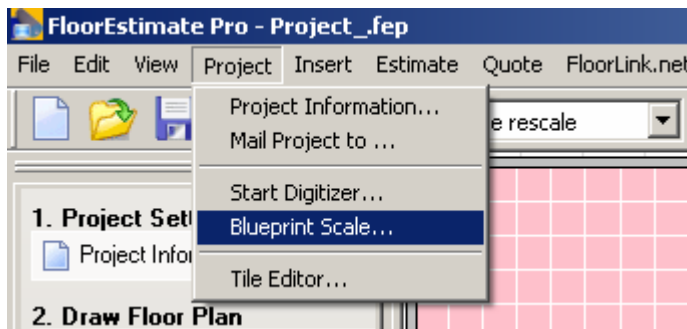
Now start to sample first corner point of a room on the blue prints, trace around and close it on the starting point. If you make a mistake in the middle of a room takeoff, use Button 1 or Button 2 (buttons on Stylus pen or on 16-button Mouse) to restart or back up one-step).

Setup Default Room Labels:

From FEP5 File/System Settings menu, select **Default Room Setting** tab, set Default Free-draw Label to desired room label prefix (for example, RM). The program will automatically generate incremental room numbers (RM1, RM2, RM3, etc.) as you takeoff rooms from blueprints.

### 3.3. Rescale Takeoff-ed FloorPlan

There are times that the scale factor based on a blueprint does not match real measurement and adjustment needs to be made after the takeoff. This can be accomplished by **Blueprint Scale** from **Project menu**. Set **Current Scale** from previous scale factor and **Changed Scale** to the to-be-adjusted one. The room sizes in floor plan will be re-adjusted without re-takeoff from the blueprints.



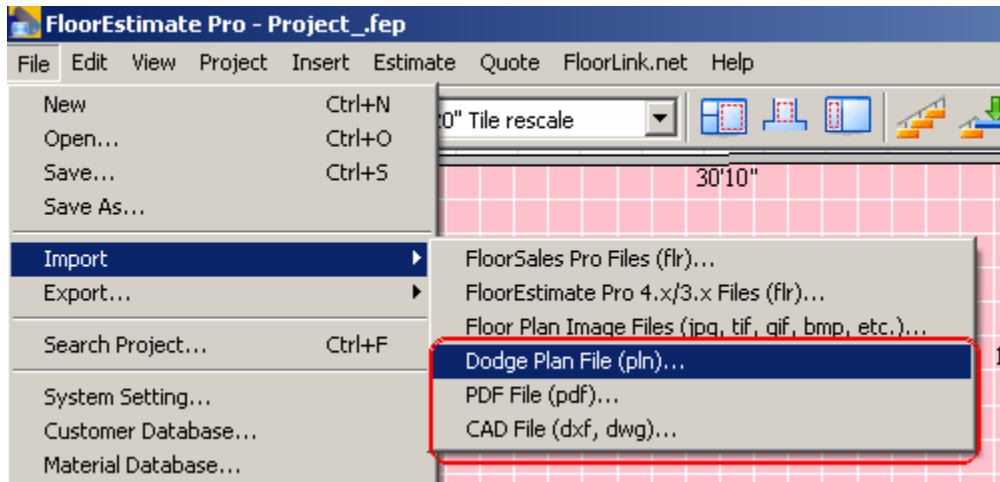
### 3.4. Trouble Shooting

- *Digitizer cannot be found by the system (TabletWorks icon in system tray has red X).* Action: Reboot Windows. If still persists, remove TabletWorks and reinstall it from the latest download <http://www.gtccocalcomp.com/files/TW-10.02.0003.exe>
- *Cannot move computer mouse properly with digitizer connected.* Action: Disconnect and reconnect digitizer USB cable with computer.
- *Cannot use computer mouse to continue with the takeoff-ed rooms.* Action: hit **Esc** key to restore normal operation.

#### 4. Import PDF files, Dodge Plan, AutoCAD DXF and DWG files

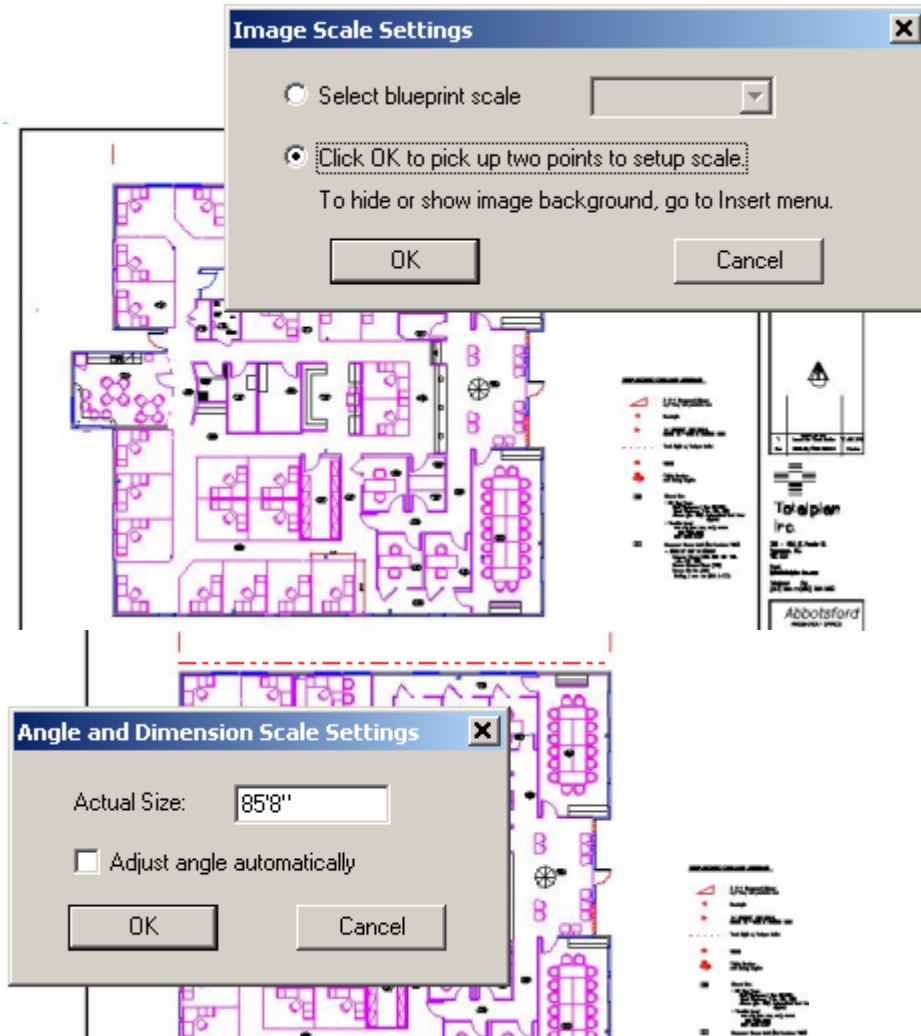
Importing PDF files, Dodge Plan, AutoCAD DXF and DWG files is only available to FEP5 COMMERCIAL Edition.

The functions can be started from File/Import. Before importing, always start a new project from **File/New**

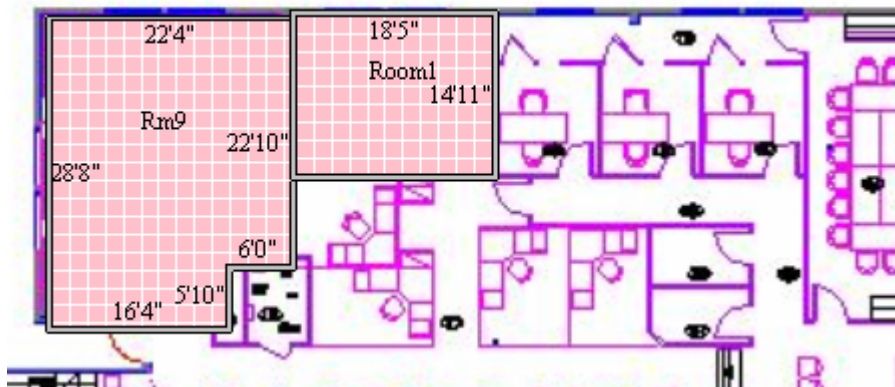


##### 4.1. Import PDF File

Before importing, always start a new project from **File/New**. Then select importing PDF File from File/Import menu. After the file is imported and image is displayed, the program prompts to pick two points on the image display to set up image scale for on-screen takeoff.



Pick two points on the image (as indicated by the dotted red lines above), and then enter the actual size between two points. The program then adjusts the image display accordingly. Now use Insert Freedraw (from Insert Menu or left Task Bar) to trace room boundary over the image display.



To reset takeoff scale on the imported image display, select **Setup Takeoff Scale** from Insert Menu, and then pick two points again.

To hide image display after completing on-screen takeoff, select **Toggle Image Background Display** from Insert Menu.

#### **4.2. Import Dodge Plan File**

Similar to PDF file import except the file extension of Dodge Plan is **.pln**.

#### **4.3. Import AutoCAD DXF and DWG File**

Similar to PDF file import except the file extensions of AutoCAD files are either DXF or DWG.

### **5. Technical Support**

Contact Technical Support Staff

Monday - Friday, 8AM-5PM, Pacific Standard Time (excluding national holidays)

Tel: 1-866-928-3326 (US), 1-626-683-9188 (International)

Fax: 1-626-683-9699

Email: [support@FloorCoveringSoft.com](mailto:support@FloorCoveringSoft.com)

Online tutorials: [www.FloorCoveringSoft.com/tutorials](http://www.FloorCoveringSoft.com/tutorials)

Web Site: [www.FloorCoveringSoft.com](http://www.FloorCoveringSoft.com)

Floor Covering Soft  
221 E Walnut Street, Suite 250  
Pasadena, CA 91101, USA

### **6. References**

Download FloorEstimate Pro 5 STANDARD User Guide

<http://floorcoveringsoft.com/support/userguide.shtml>