

Site Measuring/Drawing with Disto Meter

For FloorEstimate Pro 2011 RETAIL and Up Editions

Floor Covering Soft

FloorEstimate Pro RETAIL and up editions are integrated with Leica Disto meter **blue-tooth** models. Computers running FloorEstimate Pro must also be blue-tooth enabled to receive measurement data wirelessly transferred from Disto meters.

The key benefits for Disto drawing are

- Accurate measurement data with laser measure (without human reading errors from a tape)
- Efficiency of measuring large areas and areas with blocking objects such as office furniture and warehouse stacks

Here are instructions on how to set it up and use it for onsite measurement.

Supported Disto Models: D8, 330i, Disto A6, Disto Plus

Quick User Guide:

Step 1: Computer Bluetooth Setup: Make sure your tablet PC or laptop PC blue-tooth is turned on and if using a blue-tooth adapter, the adapter is plugged in and flashing blue lights, and a blue-tooth icon shows in system tray with white color in the middle

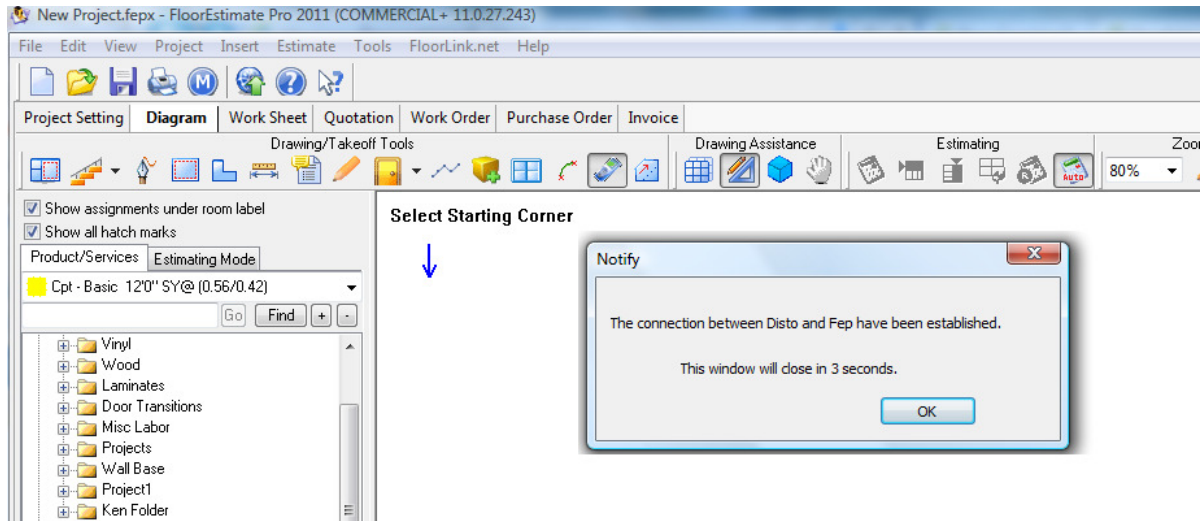


Step 2: Turn on Disto Bluetooth and 2nd Key Mode (for 330i model, wait for software connection to press on 2nd key)

Step 3: Connect FloorEstimate Pro to Disto: Click on Disto Drawing button on toolbar to connect software with Disto.



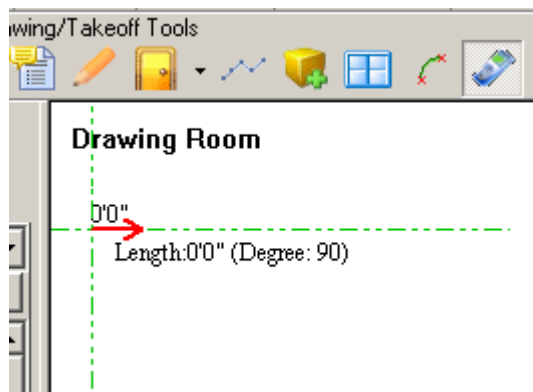
When connected successfully, a notification window pops up, and a blue arrow shows at drawing window indicating program in **Start Point Picking Mode**.



Step 4: Start Point Picking Mode. Use arrow keys on Disto to locate a Starting Point, for example, corner of a room. When a starting point is located, press Bluetooth key OR South-West Key on Disto to start drawing, observe that blue arrow turn red on drawing window.



To **scroll the drawings**, move drawing arrows further into left or right border (or upper or lower border) so program automatically shifts the drawings to make more space.



Step 5: Room Measure and Drawing Mode (key commands on Disto to measure, to draw walls, to control transfer data into software). Press Bluetooth key to start drawing and to transfer measured size to software. When closing on a room, repeat Step 4 and Step 5 to create additional rooms.



To **change drawing direction**, press and toggle on North-East key.

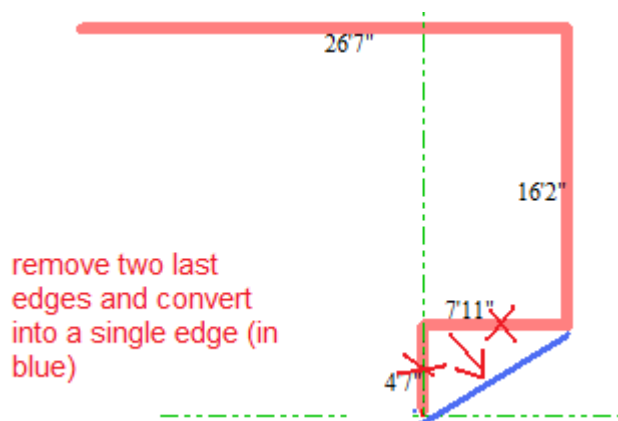
To **zoom in and out**, press on West and East keys on Disto.

To **undo one step** (to retreat one wall measurement), press on North key.

To **redo one step** (to redo last wall measurement drawing), press on South key.

To **close a room drawing** (without measuring last wall), press South-West key, or South-East key (also exiting Disto mode)

To **measure an angled wall**, measure its boxed sizes, and press on North-West key to convert two boxed edges into a boxed edge.



Tips for Disto Drawing:

- To create **rectangular room**, draw two wall measurements with right angle, press South-West key to create a rectangular room shape directly.
- If there is only one **angled wall** with unknown degree, start room drawing from one of its end and measure around rest of walls and use room-close button to close the drawing (so the angled wall gets in without measuring its angle)
- To **measure and draw doors**, one may stop at door entry and measure its width as separate wall segment (the same takeoff approach by some users without using doorway drawings). Otherwise, doors can be added back manually with mouse cursor.

Step 6: Exit and Re-entering Disto Mode. To quit Disto drawing mode, press on South-East key. After exiting, one can press on Bluetooth key to re-enter Disto drawing mode.